



zhik 29ER WORLD CHAMPIONSHIP 2018

HONG KONG, HKSAR

30 DECEMBER 2017 to 8 JANUARY 2018

The Organizing Authority is the Hong Kong Sailing Federation (HKSF) in conjunction with the International 29er Class Association and the Royal Hong Kong Yacht Club (RHKYC).

REGATTA OFFICIALS

<p>RACE COMMITTEE</p> <p>David Campbell-James (GBR), Class Principal Race Officer</p> <p>Charlie Manzoni (HKG), Race Officer</p> <p>Brenda Davies (HKG), Deputy Race Officer</p>	<p>INTERNATIONAL JURY</p> <p>Rut Subniran (THA), Chairman</p> <p>Masa Tanaka (JPN)</p> <p>Tatiana Ermakova (RUS)</p> <p>Cathy Delany (HKG)</p> <p>Jared Hickman (USA)</p> <p>Aileen Loo (SIN)</p>
<p>TECHNICAL COMMITTEE</p> <p>Don Martin (CAN), Event Equipment Inspector</p>	

SAILING INSTRUCTIONS

The notation '[NP]' in a rule in the Sailing Instructions (SIs) means that a breach of that rule will not be grounds for a protest by a boat. This changes RRS 60.1(a).

The notation '[DP]' in a rule in the SIs means that the penalty for a breach of that rule may, at the discretion of the international jury, be less than disqualification.

1 RULES

- 1.1 The regatta will be governed by the rules as defined in *The Racing Rules of Sailing* (RRS).
- 1.2 The HKSF Prescriptions set out in Attachment A to these SIs shall apply.
- 1.3 The Race Management Guidelines of the International 29er Class Association will apply except for any that are altered by the Notice of Race (NoR) or the SIs.
- 1.4 RRS 63.1 will be changed as follows: add to the list of rules in RRS 63.1 the rule 64.4(b).
- 1.5 If there is a conflict between languages the English text will take precedence.
- 1.6 Where there is conflict with the NoR, the SIs will prevail except that neither shall change nor alter any Class Rules. This changes RRS 63.7.
- 1.7 This event is designated a Clean Regatta by the Sailors for the Sea Organization, a nonprofit organization that educates and empowers boaters to protect and restore our oceans and coastal waters. Our goal is Silver Level.

2 ADDITIONAL IDENTIFICATION

- 2.1 While racing each boat shall display a coloured placard corresponding to the fleet to which she has been assigned and inserted in the pocket at the foot of the mainsail. Placards will be available at registration and spares will be available from the race office located at the 2/F of the RHKYC Middle Island clubhouse. [NP][DP]
- 2.2 Each boat shall be assigned a bow number which shall be displayed while racing. The bow number will be on the hull stickers detailed in SI 23. [NP][DP]

3 NOTICES TO COMPETITORS

Notices to competitors will be posted on the official notice board located at the 2/F of the RHKYC Middle Island clubhouse. Notices to competitors may also be posted on the event website at www.29erworlds.org.

4 CHANGES TO SAILING INSTRUCTIONS

Any change to the SIs will be posted not less than 30 minutes before flag D is displayed (SI 5.2), except that any change to the schedule of races will be posted by 20:00 on the day before it will take effect.

5 SIGNALS MADE ASHORE

- 5.1 Signals made ashore will be displayed on the flagpole on the RHKYC Middle Island hardstanding. When a signal is displayed over a fleet flag it applies to that fleet only. This changes the RRS Race Signals preamble.
- 5.2 Flag D will one sound means: 'The warning signal will be made not less than 60 minutes after flag D is displayed. Boats shall not launch until this signal is made.' [NP][DP]

6 FORMAT OF RACING

- 6.1 The regatta will consist of a qualifying series and a final series.

6.2 Qualifying Series:

- (a) For the qualifying series boats will be assigned to fleets Yellow and Green of, as nearly as possible, equal size and ability. Initial fleet assignments will be made by a seeding committee appointed by the organising authority, and posted by 08:30 on the first day of racing.
- (b) In the qualifying series boats will be reassigned to fleets after each day of racing, except if on the first day only one race is completed. If all fleets have completed the same number of races, boats will be reassigned on the basis of their ranks in the series. If all fleets have not completed the same number of races the series scores for reassignment will be calculated for those races, numbered in order of completion, completed by all fleets. Reassignments will be made as follows:

Rank in series	Fleet assignment
First	Yellow
Second	Green
Third	Green
Fourth	Yellow
Fifth	Yellow
Sixth	Green
and so on.	

- (c) Assignments will be based on the ranking available at 18:00 that day regardless of protests or requests for redress not yet decided.

- (d) If both fleets have not completed the same number of races by the end of a day, the fleet with the fewer races will continue racing the following day until both fleets have completed the same number of races. All boats will thereafter race in the new fleets.

6.3 Final Series:

- (a) Boats will be assigned to final series fleets Gold and Silver, on the basis of their ranks in the qualifying series available at 21:00 on the last day of the qualifying series.
- (b) The boats ranked in the top half in the qualifying series will be assigned to the Gold fleet. If the total number of boats to be assigned to these fleets is not evenly divisible, the first extra position will be assigned to the Gold fleet.
- (c) Any recalculation of qualifying series ranking after boats have been assigned to final series fleets will not affect the assignments except that a redress decision may promote a boat to a higher fleet.
- (d) The top three competitors of each day in the Gold fleet shall wear leader bibs (1st – yellow, 2nd – blue, 3rd – red) as directed by the organising authority. The bibs will be supplied by the organising authority.

7 SCHEDULE

- 7.1 The schedule will be:

Date	Event
Saturday 30 December 2017	Registration, Measurement & Inspection 09:00 – 17:00, RHKYC Middle Island
Sunday 31 December 2017	Registration, Measurement & Inspection 09:00 – 17:00, RHKYC Middle Island
Tuesday 2 January 2018	Registration, Measurement & Inspection 09:00 – 15:00, RHKYC Middle Island Coaches' Meeting with Organising Authority 11:00, RHKYC Middle Island Practice Race, First Warning Signal at 13:55 Opening Ceremony & Dinner 18:30, RHKYC Kellett Island
Wednesday 3 January 2018	Qualifying Series Races – 3 races
Thursday 4 January 2018	Qualifying Series Races – 4 races
Friday 5 January 2018	Qualifying Series Races – 3 races
Saturday 6 January 2018	Final Series Races – 3 races
Sunday 7 January 2018	Final Series Races – 4 races
Monday 8 January 2018	Final Series Races – 3 races Prize Giving & Closing Ceremony After Racing, RHKYC Kellett Island

- 7.2 One extra race per day may be sailed, provided that the event becomes no more than one race ahead of schedule and the change is according to SI 4.
- 7.3 A coaches' briefing is scheduled for 08:30 each race day.
- 7.4 The scheduled time of the warning signal for the first race each day is 10:55.
- 7.5 To alert boats that a race or sequence of races will begin soon, the orange starting line flag will be displayed with one sound at least two minutes before a warning signal is made.

- 7.6 On Monday 8 January 2018 no warning signal will be made after 15:00. In the case of one or more postponements, general recalls or abandonments when the initial warning signal was made prior to 15:00, the race committee may display subsequent warning signals after this time.

8 CLASS FLAGS

Class flags will be coloured flags which may include the class insignia as follows:

Qualifying fleets	Final fleets	Flag colour
Yellow	Gold	Yellow
Green	Silver	Green

9 RACING AREAS

- 9.1 Attachment B shows the approximate location of the racing areas.
- 9.2 The racing area to be used for the first race on a day will be posted before flag D (SI 5.2) is displayed.
- 9.3 The starting area is defined as a rectangle covering the area 100 metres to both windward and leeward of the starting line and 100 metres to both port and starboard of either end of the starting line.

10 THE COURSES

- 10.1 The diagram in Attachment C shows the courses, including the course signals, the order in which marks are to be passed, and the side on which each mark is to be left.
- 10.2 No later than the warning signal, the race committee signal vessel will display the approximate compass bearing of the first leg.
- 10.3 Courses will not be shortened. This changes RRS 32.

11 MARKS

- 11.1 Marks 1, 2s and 2p will be orange inflatable buoys.
- 11.2 New marks, as provided in SI 13, will be inflatable buoys with pink covers.
- 11.3 Starting marks and finishing marks will be race committee vessels.

12 THE START

- 12.1 The starting line will be between staffs displaying orange flags on the starting marks.
- 12.2 Boats whose warning signal has not been made shall avoid the starting area during the starting sequence for other races. [NP][DP]
- 12.3 A boat that does not start within 4 minutes after her starting signal will be scored Did Not Start without a hearing. This changes RRS A4 and A5.

13 CHANGE OF THE NEXT LEG OF THE COURSE

To change the next leg of the course, the race committee will lay a new mark (or move the finishing line) and remove the original mark as soon as practicable. When in a subsequent change a new mark is replaced, it will be replaced by an original mark.

14 THE FINISH

The finishing line will be between staffs displaying orange flags on the finishing marks.

15 PENALTY SYSTEM

- 15.1 RRS 44.1 is changed so that the Two-Turns Penalty is replaced by the One-Turn Penalty.
- 15.2 A boat that has taken a penalty or retired according to RRS 44.1 and SI 15.1 shall complete an acknowledgement form at the race office within the protest time limit. [NP][DP]
- 15.3 RRS Appendix P will apply with the following changes. The penalty under RRS P2.1 shall be the One-Turn Penalty. RRS P2.2 is changed so that it will apply to any penalty after the first one. RRS P2.3 will not apply.

16 TIME LIMITS AND TARGET TIMES

- 16.1 Time limits and target times are as follows:

Time limit	Mark 1 time limit	Target time
45 minutes	15 minutes	30 minutes

- 16.2 If no boat has passed Mark 1 within the Mark 1 time limit or if no boat has finished within the time limit the race will be abandoned. Failure to meet the target time will not be grounds for redress. This changes RRS 62.1(a).
- 16.3 Boats failing to finish within 15 minutes after the first boat sails the course and finishes will be scored Did Not Finish without a hearing. This changes RRS 35, A4 and A5.
- 17 PROTESTS AND REQUESTS FOR REDRESS**
- 17.1 Protest forms are available at the jury desk located at the 2/F of the RHKYC Middle Island clubhouse. Protests and requests for redress or reopening shall be delivered there within the appropriate time limit.
- 17.2 For each fleet the protest time limit is 90 minutes after the last boat has finished the last race of the day, after SI 16.3 has been applied to that race, or the race committee signals no more racing today, whichever is later.
- 17.3 Notices will be posted no later than 30 minutes after the protest time limit to inform competitors of hearings in which they are parties or named as witnesses. Hearings will be held in the jury room, located at the 2/F of the RHKYC Middle Island clubhouse.
- 17.4 Notices of protests by the race committee, technical committee or jury will be posted to inform boats under RRS 61.1(b).
- 17.5 A list of boats that, under SI 15.3, have been penalized for breaking RRS 42 will be posted.
- 17.6 On the last scheduled day of racing a request for reopening a hearing shall be delivered:
- (a) within the protest time limit if the requesting party was informed of the decision on the previous day; or
 - (b) no later than 30 minutes after the requesting party was informed of the decision on that day. This changes RRS 66.
- 17.7 If RRS Appendix N1.4(b) applies, the time limit for requesting a hearing under that rule is 30 minutes after the party was informed of the panel's decision.
- 17.8 On the last scheduled day of racing a request for redress based on a jury decision shall be delivered no later than 30 minutes after the decision was posted. This changes RRS 62.2.
- 17.9 Decisions of the jury will be final as provided in RRS 70.5.

18 ARBITRATION

RRS Appendix T will apply.

19 SCORING

- 19.1 Three races are required to be completed by all fleets to constitute the ZhiK 29er World Championship 2018.
- 19.2 Five races are required to be completed by each fleet to constitute a qualifying series. If five races are not completed as scheduled, the qualifying series will be extended.
- 19.3 If at the end of the qualifying series some boats have more race scores than others, scores for the most recent races will be excluded so that all boats have the same number of race scores.
- 19.4 For the qualifying series, RRS A4.2 is changed so that the scores are based on the number of boats assigned to the larger fleet.
- 19.5 The qualification series position will be carried forward as non-excludable points to the final series.
- 19.6 Each final series fleet will be scored separately. Different final series fleets need not have completed the same number of final races. The boats in the Gold fleet will be ranked highest in the Championship.
- 19.7 Series scores (apply separately to qualifying and final series):
- (a) When fewer than five races have been completed, a boat's series score will be the total of her race scores.
 - (b) When from five to eight races have been completed, a boat's series score will be the total of her race scores excluding her worst score.
 - (c) When nine or more races have been completed, a boat's series score will be the total of her race scores excluding her two worst scores.
- 19.8 Except for race scores excluded under SI 19.3 and SI 19.7, a boat's regatta score will be the total of her race scores from her final series races plus points equal to her qualifying-series rank and any non-excludable points under SI 20.2(a).
- 19.9 To request correction of an alleged error in posted race or series results, a boat shall complete a scoring enquiry form available at the race office.

20 SAFETY REGULATIONS

- 20.1 Competitors shall wear personal flotation devices adequate for the conditions at all times whilst afloat, except briefly while adjusting clothing or personal equipment. Flag Y will not be displayed. This changes RRS 40 and Race Signals. [NP][DP]
- 20.2 **Check-out and check-in:** The requirements of these instructions are specified for the safety of competitors.
- (a) Each helm and crew shall check out each day before launching by scanning their RFID wristband at the RHKYC Middle Island launching ramp. After returning each helm and crew shall check in by scanning their RFID wristband at the RHKYC Middle Island launching ramp within the protest time limit. On the last scheduled day of racing, each helm and crew shall check in by scanning their RFID wristband at either the RHKYC Middle Island launching ramp or the HK Sea School container park when returning to shore within the protest time limit. Competitors shall wear their wristbands at all times whilst afloat. The penalty per breach of SI 20.2(a) shall be 2 penalty points applied to the competitor's boat's score. The penalty points will be non-excludable. This changes RRS 63.1. [NP]
 - (b) Wristbands will be issued at registration (1 per competitor) and shall be returned to the check-in point on the last scheduled day of racing. The RFID chip in the wristband corresponds with the competitor's personal details in the regatta entry system. Therefore the wristband is strictly personal and shall not be exchanged with other sailors. Replacement of lost wristbands will result in a non refundable fee of HK\$100.

- 20.3 A boat that retires from a race shall notify the race committee as soon as possible and shall complete the relevant form available at the race office. [NP][DP]
- 20.4 Under all circumstances coaches and other support boats are expected to assist any boat in distress. [NP][DP]
- 20.5 When the race committee displays flag V with repetitive sounds, all official and support boats shall monitor VHF channel 72 for search and rescue instructions. [NP][DP]
- 20.6 In the event of an emergency all boats shall follow the safety plan which will be distributed to coaches at the Coaches' Meeting.

21 REPLACEMENT OF CREW AND EQUIPMENT

- 21.1 Substitution of competitors will not be allowed without prior written approval of the race committee. Requests shall be made on the relevant form available at the race office. [NP][DP]
- 21.2 Substitution of damaged or lost equipment will not be allowed unless approved in writing by the technical committee. Requests for substitution shall be made to the technical committee at the first reasonable opportunity. [NP][DP]
- 21.3 Substitution of damaged or lost equipment may be permitted provided that the relevant form has been completed at the race office and both the damaged and the substituting equipment has been inspected by the technical committee.
- 21.4 If the substitution was made on the water between races, both the damaged and the substituting equipment shall be presented to the technical committee after the end of the day's racing. The substitution is subject to the approval of the technical committee given retrospectively. [NP][DP]

22 EQUIPMENT AND MEASUREMENT CHECKS

- 22.1 A boat or equipment may be inspected at any time for compliance with the class rules and SIs. On the water, a boat can be instructed by a technical committee equipment inspector or measurer to proceed immediately to a designated area for inspection.
- 22.2 Only one set of sails and one forestay may be used during the regatta. They shall be presented and stamped/tagged during the measurement procedure. [NP]

23 ADVERTISING

- 23.1 Boats shall display event advertising supplied by the organising authority as follows: hull stickers – on both sides of the forward 25% of the hull, boom stickers – on the forward part of each side of the boom. If this rule is broken, World Sailing Regulation 20.9.2 applies. [NP][DP]
- 23.2 The hull stickers will be applied by the organising authority during measurement. Replacement stickers will be available from the race office and shall be applied by the competitors. [NP]

24 OFFICIAL BOATS

Official boats will be marked as follows:

Boat	Flag
Race committee	White flag, black RC
Jury	White flag, black JURY
Measurer	White flag, black M
Safety	White flag, black 1, 2, 3 etc.
Media	White flag, black MEDIA

25 SUPPORT BOATS [NP][DP]

- 25.1 Support boats shall register with the organizing authority at the race office during the registration period. All support boats shall comply with local legislation and event and Class support boat regulations.
- 25.2 Coaches shall complete registration and pay the appropriate fee as per NoR 4.3.
- 25.3 Support boats shall clearly display on a flag or outboard cover the three national letter code of their World Sailing Member National authority at all times whilst afloat.
- 25.4 If called upon, support boats will be required to act as rescue boats.
- 25.5 Team leaders, coaches and other support personnel shall stay more than 50m outside areas where boats are racing from the time of the preparatory signal until all boats have finished or retired or the race committee signals a postponement, general recall or abandonment. This instruction is not applicable when assisting a boat in distress.
- 25.6 Team leaders, coaches and other support personnel shall carry and operate whilst afloat a marine band VHF radio capable of transmitting and receiving the normal international channels.

26 TRASH DISPOSAL [NP][DP]

Disposal of trash in the water is strictly prohibited. Trash may be placed aboard support or official boats.

27 BERTHING [NP][DP]

Boats shall be kept in their assigned places in the boat park.

28 RADIO COMMUNICATION [NP][DP]

Except in an emergency, a boat that is racing shall not make voice or data transmissions and shall not receive voice or data communication that is not available to all boats.

29 GPS TRACKING UNITS [NP][DP]

- 29.1 Boats shall carry the GPS tracking units provided by the organising authority.
- 29.2 Before launching on the days of the Qualifying and Final series, a boat's representative shall collect her GPS tracking unit from the tracking desk located in the marquee on the RHKYC Middle Island hardstanding.
- 29.3 The GPS tracking unit shall be returned to the tracking desk no later than the expiration of the protest time limit each day.

30 PRIZES

- 30.1 Prizes will be awarded to the first three boats in the Gold and Silver fleets.
- 30.2 Other prizes will be awarded at the discretion of the organizing authority.
- 30.3 Class perpetual trophies will be awarded to:
- (a) the overall winning team;
 - (b) the top female team; and
 - (c) the top youth team.

31 DISCLAIMER OF LIABILITY

Competitors participate in the regatta entirely at their own risk. See RRS 4, Decision to Race. The organising authority will not accept any liability for material damage or personal injury or death sustained in conjunction with or prior to, during, or after the regatta.

32 INSURANCE

Each participating boat shall be insured with valid third-party liability insurance with a minimum cover of \$5,000,000 HKD per incident or the equivalent.

33 RIGHTS TO USE NAME AND LIKENESS

- 33.1 By participating in this event, competitors automatically grant to the organizing authority and the event sponsors the right, in perpetuity, to make, use, and show, at their discretion, any photography, audio and video recording, and other reproductions of them made at the venue or on the water from the time of their arrival at the venue, until their final departure, without compensation.
- 33.2 A drone may be flown to record video and still imagery primarily for regatta advertising and promotion.

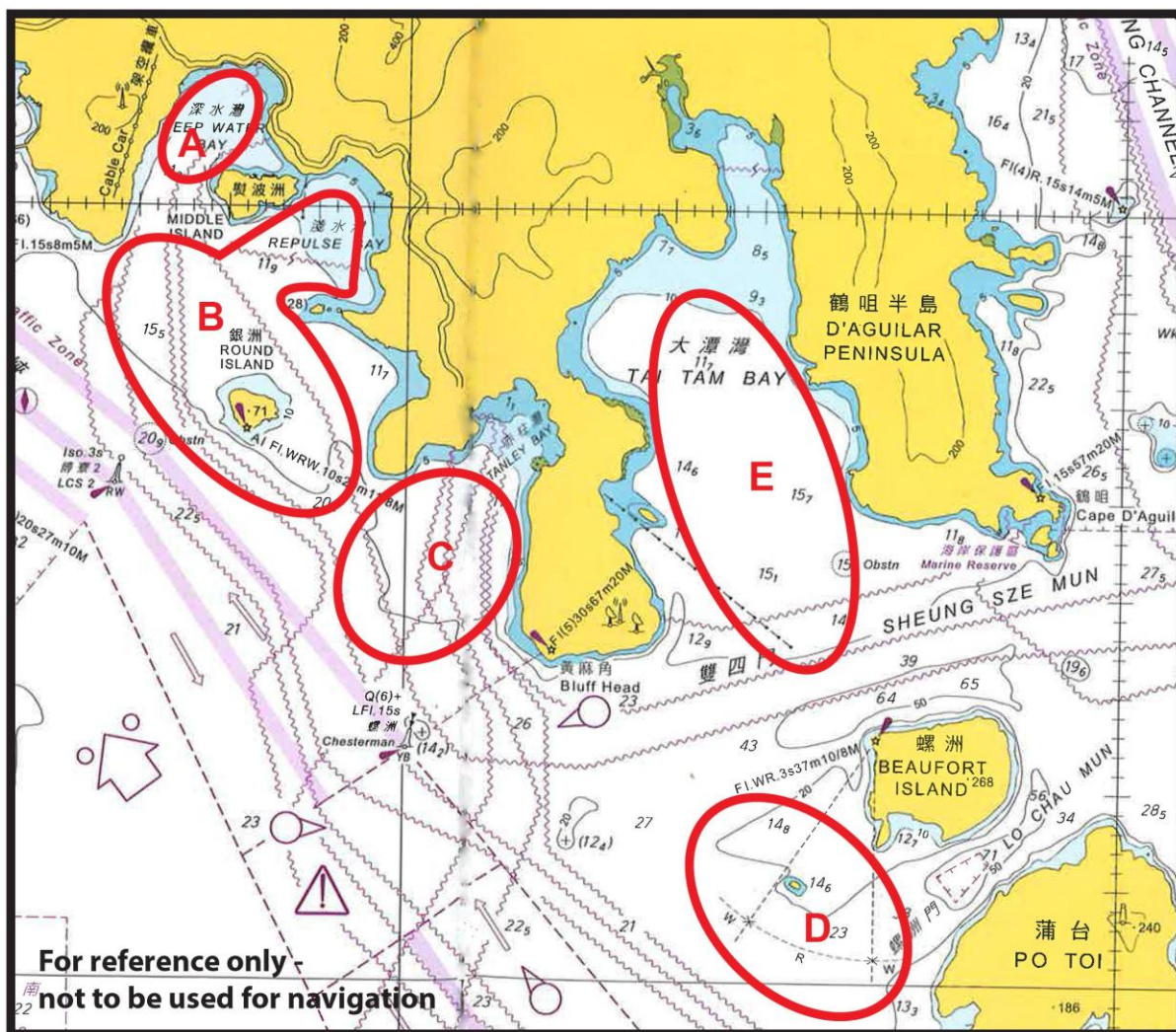
ATTACHMENT A – HKSF PRESCRIPTIONS

Rule Prescription

67 Damages

- 1 No claim for damages arising from breaches of these rules or the sailing instructions shall be adjudicated upon by any race committee or appeal authority, but shall be subject to the jurisdiction of the courts.
- 2 A boat which acknowledges infringing a rule by retiring or taking a penalty does not thereby admit liability for damage.
- 3 The findings of fact and decisions of protest committees shall be relevant only to the purposes of the World Sailing Racing Rules of Sailing and shall not be referred to in any proceedings for damages without the written consent of the protest committee.
- 4 Notwithstanding 3 above, any owner of a boat may be liable for damages arising from a breach of these rules and may be subject to limitations under the Merchant Shipping Ordinance or related ordinances or regulations of the laws of Hong Kong.

ATTACHMENT B – APPROXIMATE LOCATION OF RACING AREAS



ATTACHMENT C – COURSE DIAGRAM

COURSE: WINDWARD / LEEWARD with reaching finish	
Signal	Mark Rounding Order
L2	Start – 1 – 2s/2p – 1 – 2p – Finish
L3	Start – 1 – 2s/2p – 1 – 2s/2p – 1 – 2p – Finish

Notes

Mark 1 shall be rounded to port. At gate 2s/2p, boats shall pass between the marks and round either mark. The gate may be replaced by a single mark which shall be rounded to port.

